

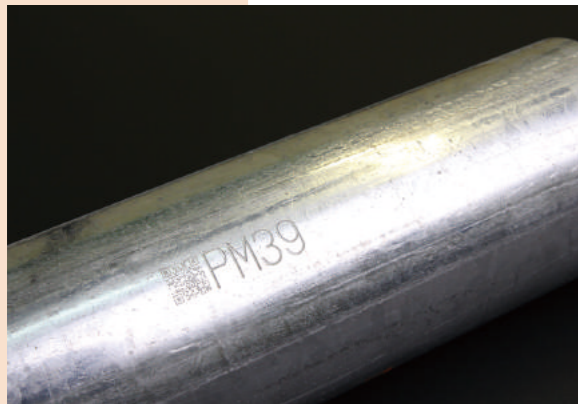
Patmark®

As an ideal industrial marker, Patmark lets you expand your marking area capabilities.

A longer window, 33mm (1.3"), gives you an efficient and cost-effective marking solution.



Deep mark on structural steel



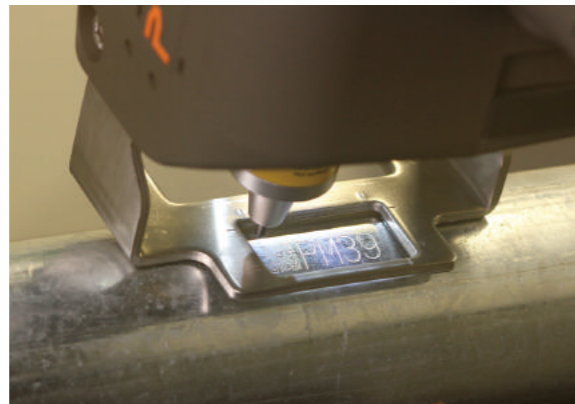
Mark 2D code on pipe



Hanging by tool balancer



Logo mark on curved surface



Bright LED guides marking location.

Marking area
15mm (0.6") x 33mm (1.3")



Your working fields matter.

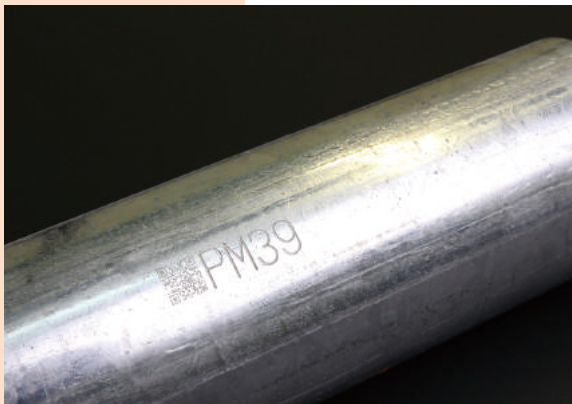
Patmark®

As an ideal industrial marker, Patmark lets you expand your making area capabilities.

A longer window, 33mm (1.3"), gives you an efficient and cost-effective marking solution.



Deep mark on structural steel



Mark 2D code on pipe



Logo mark on curved surface



Hanging by tool balancer



Bright LED guides marking location.

Marking area
15mm (0.6") x 33mm (1.3")



Your working fields matter.